

UA Sustainability Council || Agenda

February 18, 2025
Tuesday
3:00-4:30PM
MS Teams



1. Co-chair updates
 - a. Associate Vice Chancellor, Facilities Management, Scott Turley
 - i. Official title is now Special Projects and Utilities Support Services, officially retired, but sticking around to see some utilities projects through.
 - ii. Solar farm in Nashville, AR part of the UA System solar service agreement, which will be a 3-megawatt solar array.
 - iii. Scott is working with Swepeco getting site approvals for the other UA System arrays, which you can find a map of all the proposed locations [here](#).
 - iv. Shovels are in the ground moving these solar projects forward and the UA anticipates the arrays to begin producing power by the end of 2025.
 - v. The full details of the UA solar service agreements can be found at solar.uark.edu
 - b. Director of Sustainability Academic Programs, Ken McCown
 - c. ASG Director of Environmental Affairs, Ben Hollis
 - i. ASG organized a bike giveaway to students with pedal it forward and they plan to give those bikes out at the next Cruise to Campus event on March 5.
 - ii. There is an Earth Day Celebration with a farmers market on campus scheduled for April 22 at the Union Mall from 9:30 am – 1:30 pm
2. Updates from Emma Armendariz, the UA's Active Transportation Coordinator
 - a. Commuter Survey results
 - i. Over 1,000 responses from students, faculty and staff
 - ii. The data show a continuing trend away from cars with the rise of alternatives like personal electric devices such as scooters, bicycles and skateboards, apartment shuttles, and the scooter and bike share system through Spin and VEO.
 - iii. In 2015 60% of people who participated claimed a car as their primary mode of transportation whereas in 2025 that number is now 46%
 - iv. Some feedback received from the survey was: not enough premium or indoor bicycle parking, no end of ride facilities like locker rooms available for commuters, citing the lack of these things being a barrier to commuting.
 - v. The full slide deck with the full commuter survey data is attached.
 - b. Campus bicycle parking

- i. Moving forward with a secured covered bike parking facility outside the Union and installing four more bike racks on the east side of Mullins Library once the renovation is complete
 - c. Ramp projects
 - i. Moving forward with converting a set of stairs going in to the first level of Harmon Garage into a ramp to provide easier access to bicycles.
 - d. Maple Street
 - i. Maple St renovation is in full swing, and we are hoping to break ground this summer, thanks to the 7.5 million dollar Safer Streets for All grant.
 - ii. The project includes a new streetscape with 8' senior walks on the north and south side, premium crosswalks with a shorter travel distance, a full cycle track on the south side of the road that will connect directly into the Razorback Greenway
 - e. Bike Fest → GORP Fest
 - i. GORP Fest is intended to be a celebration of outdoor engagement and an opportunity for student, faculty, and staff to learn about what resources exist to support their outdoor interests on campus and throughout Northwest Arkansas. Through this event, attendees will find opportunities to connect with our outdoor community and celebrate the joy of spending time outside, satisfying the needs and wants centered around recreation, transportation, well-being and more.
 - ii. The event is April 3 at the Union Mall from 11:00 am – 2:00 pm
- 3. ASG SR2 in support of more native plants on campus
 - a. ASG Sentate Chair Logan Martin shared updates about a resolution passed to have native plants be the focus for new beds and construction on campus, and work with OFS and campus planning to update the campus landscape manuals.
- 4. EPA Carbon Pollution Reduction Grant
 - a. The UA has three projects that were awarded 2.4 million dollars from the EPA as part of a larger grant received by NWA.
 - b. The three projects are the Oak Ridge Paved Trail extension that would complete the “campus loop,” Oak Ridge Hillside (south of WCOB) land restoration, and the Arkansas Research and Technology Park of 25 acres in a non-buildable floodplain, as well as the remnant prairie and Oak Knoll at the Cato Springs Research center.
- 5. Bird Strike prevention decals
 - a. There have been several locations identified on campus as high risk for bird strike deaths and the OFS is working with FAMA to get dot matrix decals installed on these areas. One is the skybridge between WCOB and the Reynolds Enterprise center.
- 6. Discussion about challenges and opportunities across campus

7. New annual reports have been published. Please request physical copy from sustain@uark.edu
8. Good-of-the-Order
9. Next meeting is April 15th



UA
Sustainability
Council

UA Sustainability Council || Agenda



February 18, 2025
Tuesday
3:00-4:30PM
MS Teams

1. Co-chair updates
 - a. Associate Vice Chancellor, Facilities Management, Scott Turley
 - b. Director of Sustainability Academic Programs, Ken McCown
 - c. ASG Director of Environmental Affairs, Ben Hollis
2. Updates from Emma Armendariz, the UA's Active Transportation Coordinator
 - a. Commuter Survey results
 - b. Campus bicycle parking
 - c. Ramp projects
 - d. Maple Street
 - e. Bike Fest → GORP Fest
3. ASG SR2 in support of more native plants on campus
4. EPA Carbon Pollution Reduction Grant
5. Bird Strike prevention decals
6. Discussion about challenges and opportunities across campus
7. New annual reports have been published. Please request physical copy from sustain@uark.edu
8. Good-of-the-Order
9. Next meeting is April 15th



2024 Commuter Survey

University of Arkansas

Results and data analysis

Background

- Each year, the Office for Sustainability leads efforts to collect data on university wide transportation trends. In early September of 2024, OFS began distribution of their digital commuter survey to students, faculty, and staff across campus.
- Some of the main areas of interest include:
 - Primary modes of transportation used to get to/from campus
 - Satisfaction levels with existing transportation modes and services
 - Commuter interest in improvements to transportation services
 - Changing mode share trends
 - User feedback

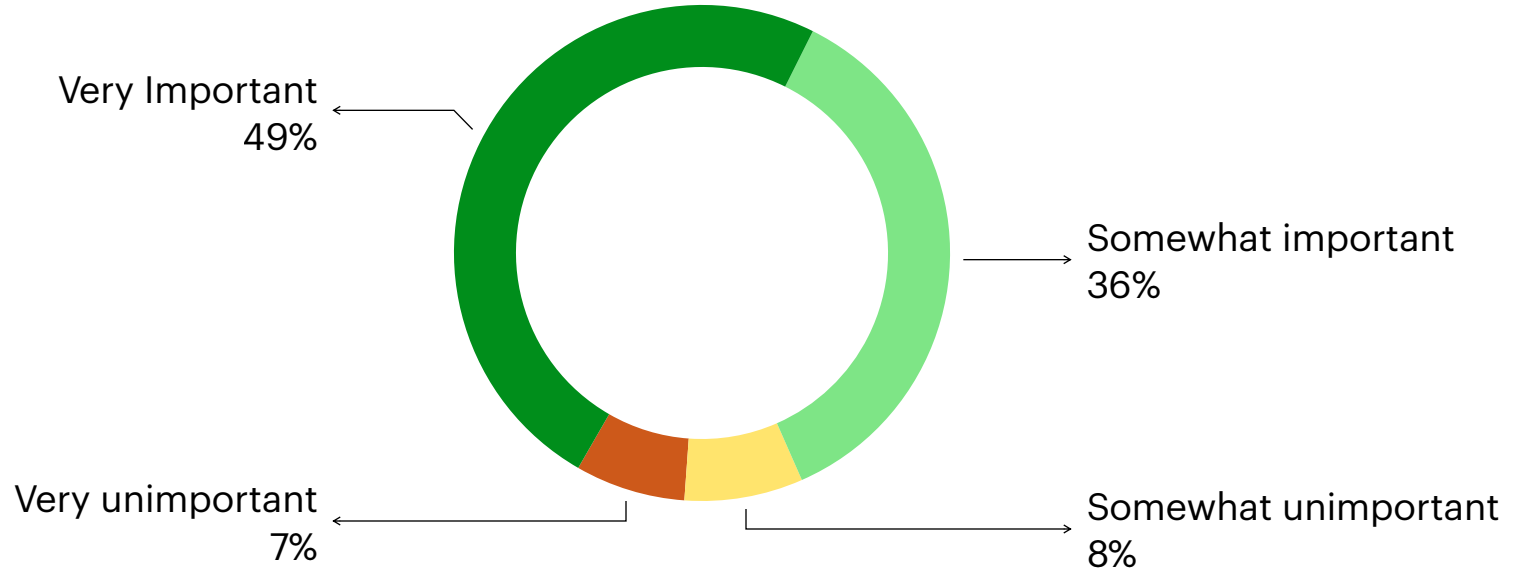
Commuter Survey Overview

- Survey was administered from September 3rd - October 10th, 2024
- 1,022 responses from UARK faculty, staff, and students were collected
- Submitted responses were anonymous unless participant wished to enter the giveaway
- **65%** of respondents were ages 18-24
- **62%** of respondents were off-campus students
- **86%** of respondents commute to campus at least five days per week

University of Arkansas Environmental Impact

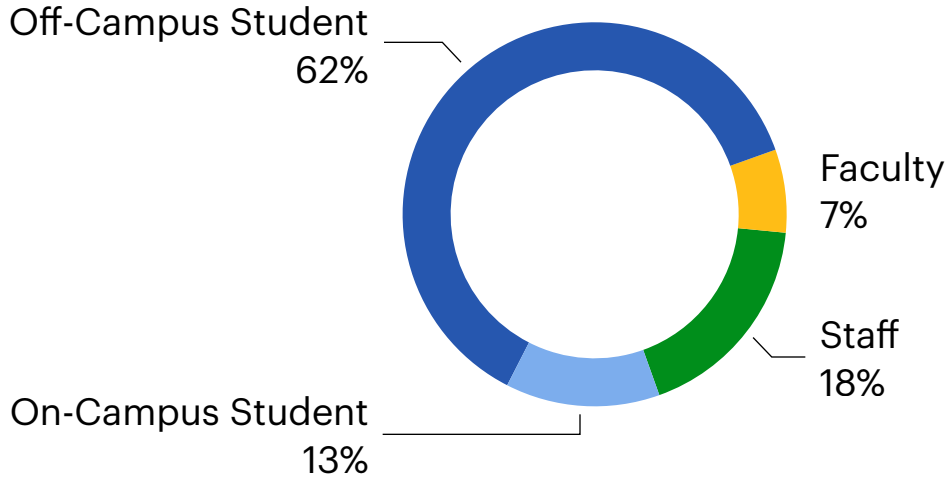
“In your opinion, how important is it that the University of Arkansas reduces it’s impact on the environment?”

- **85% of respondents believe the UofA should reduce it’s environmental impact**



Survey Respondents - Demographics

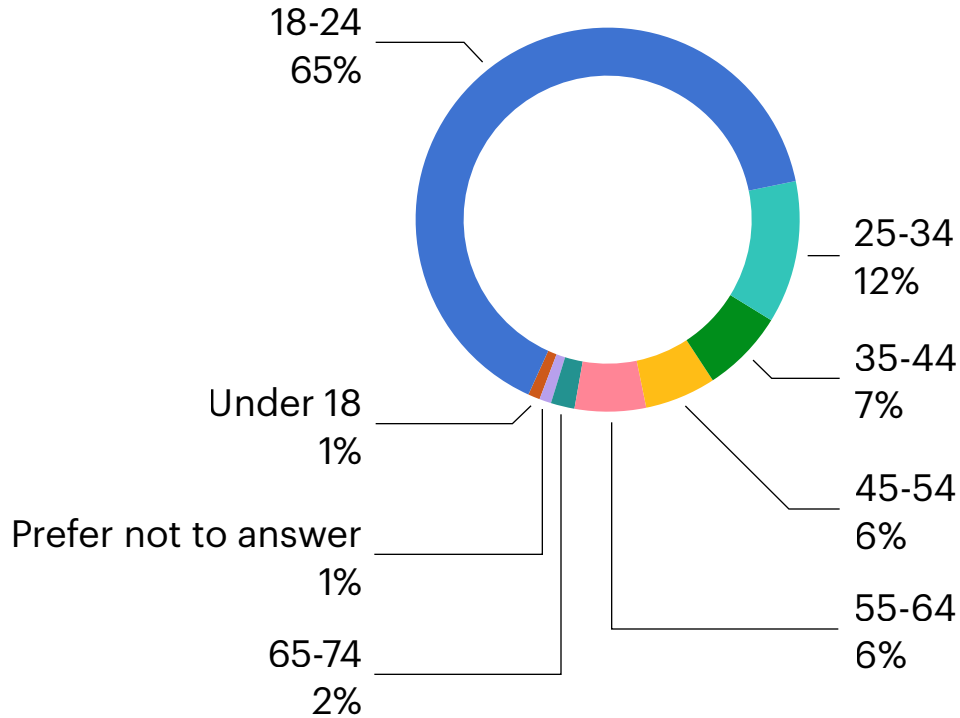
UARK Affiliation



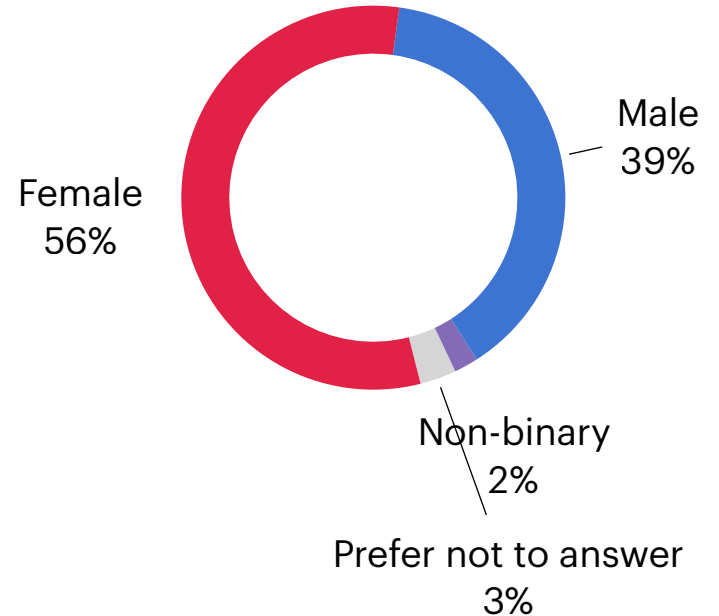
UA Affiliate Group	Total Campus Population	Number of Responses Received	Percentage of Total Population
Faculty	1,651	61	3.7%
Staff	3,750	181	4.8%
Students	32,140	743	2.3%

Survey Respondents - Demographics

Age Range



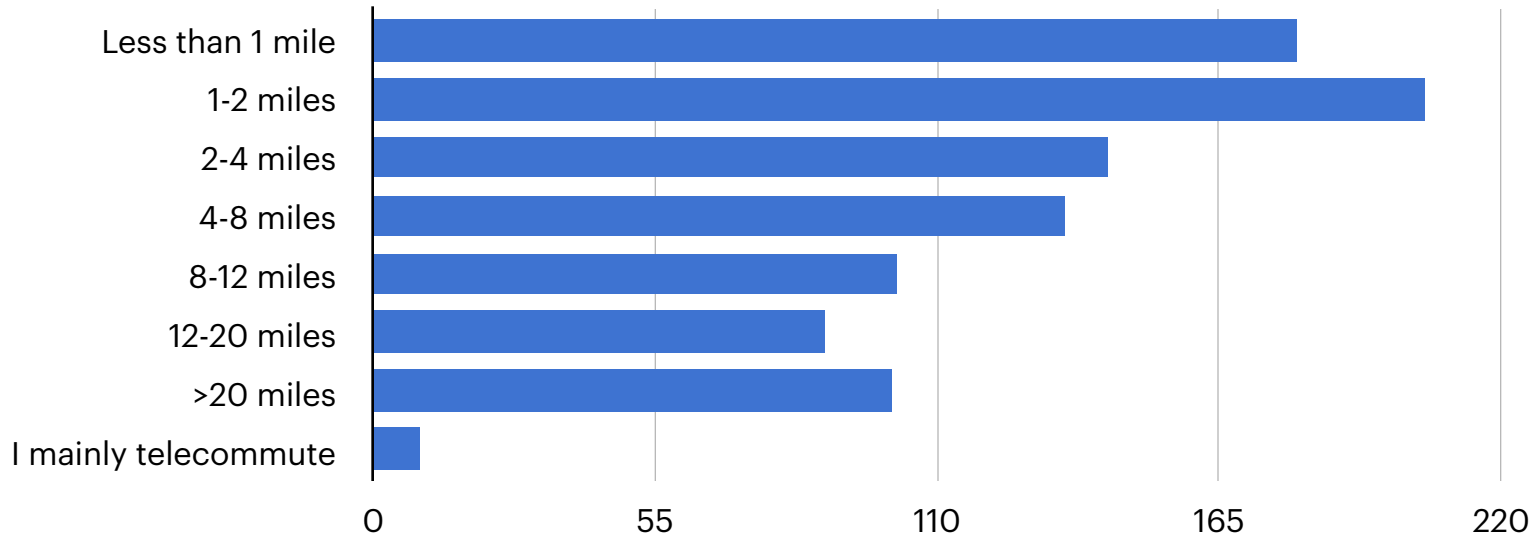
Gender



Getting to campus

“Approximately how many miles is your one-way trip to campus?”

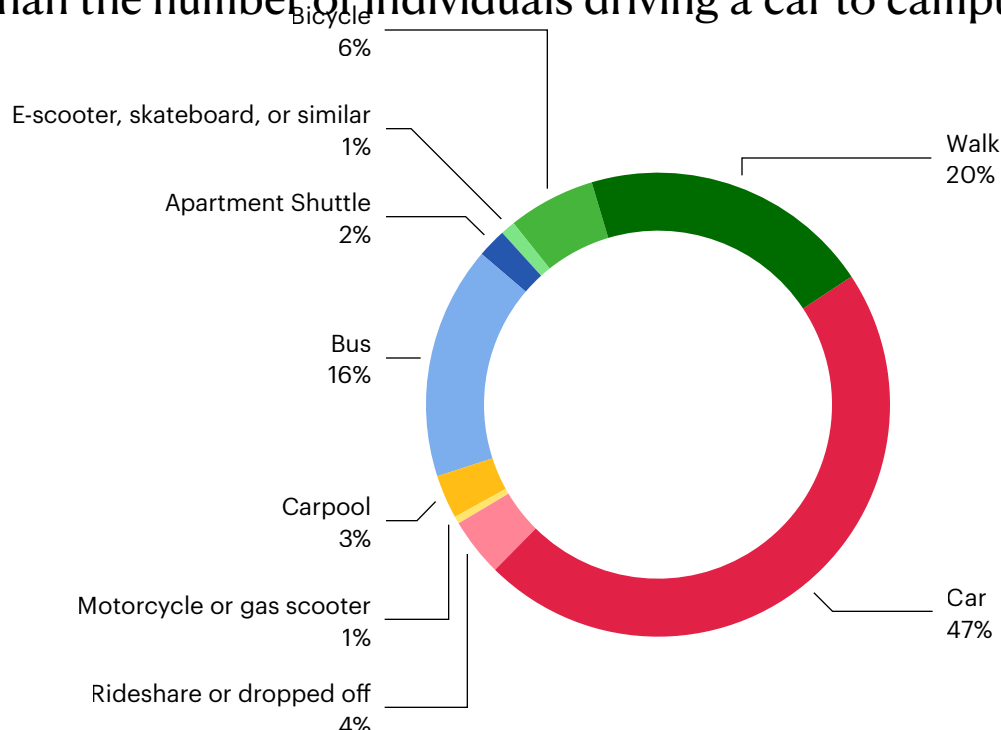
- **40%** of respondents reported they live **within two miles of the main UofA campus**, a very conducive range to use alternative transportation



Getting to campus

“What modes do you most often use to get to and from campus?”

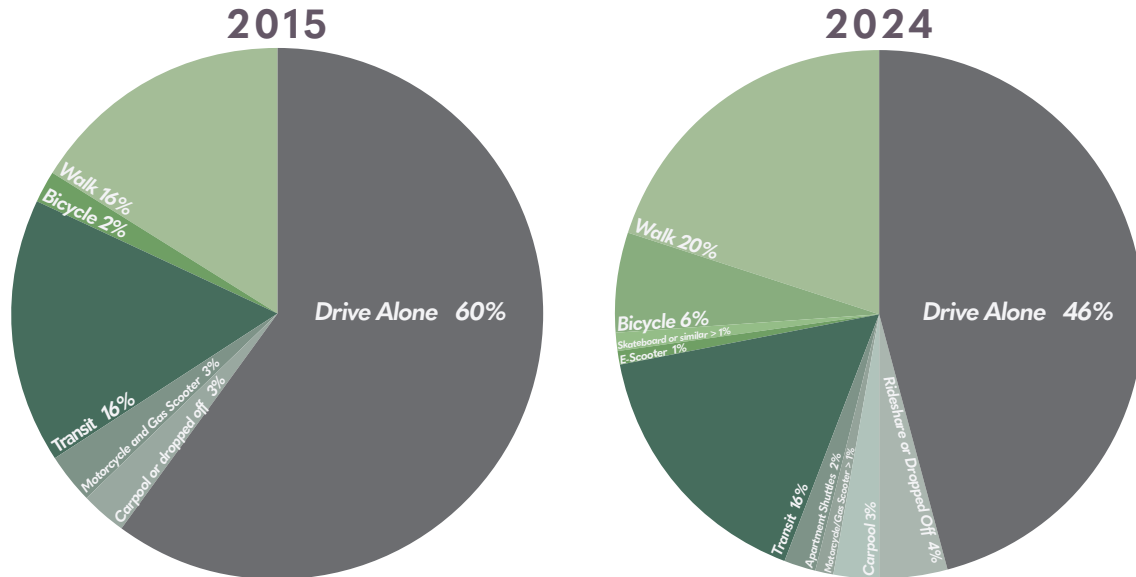
- The number of individuals using **alternative transportation** to get to campus is greater than the number of individuals driving a car to campus



Getting to campus

“What modes do you most often use to get to and from campus?”

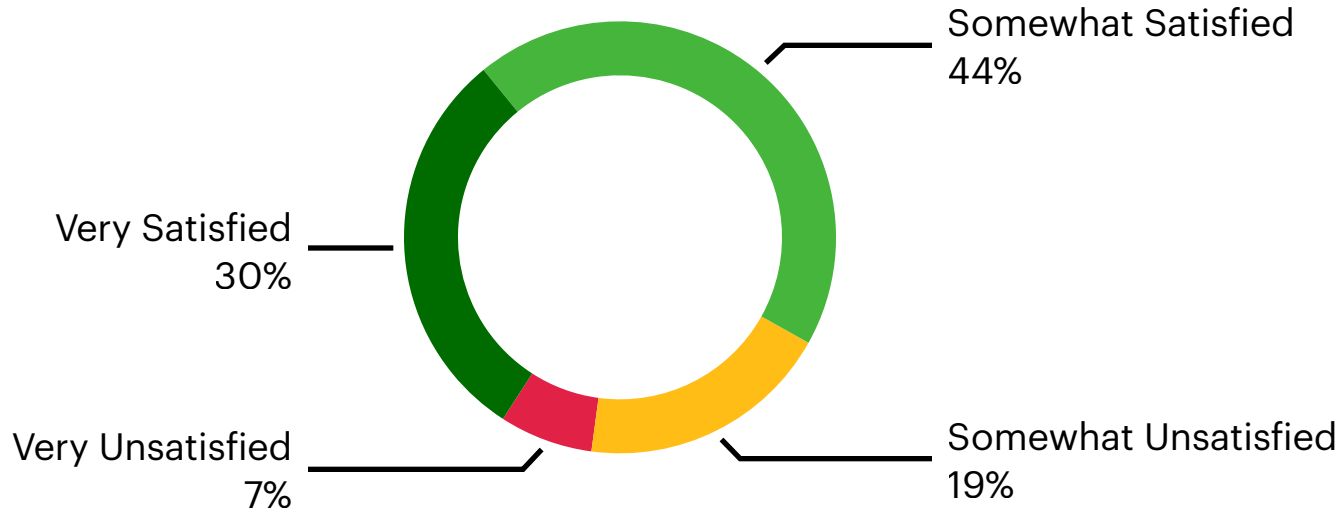
- Over the last decade, transportation trends have shown a **decline in the number of people primarily driving to campus.**



Commuter satisfaction

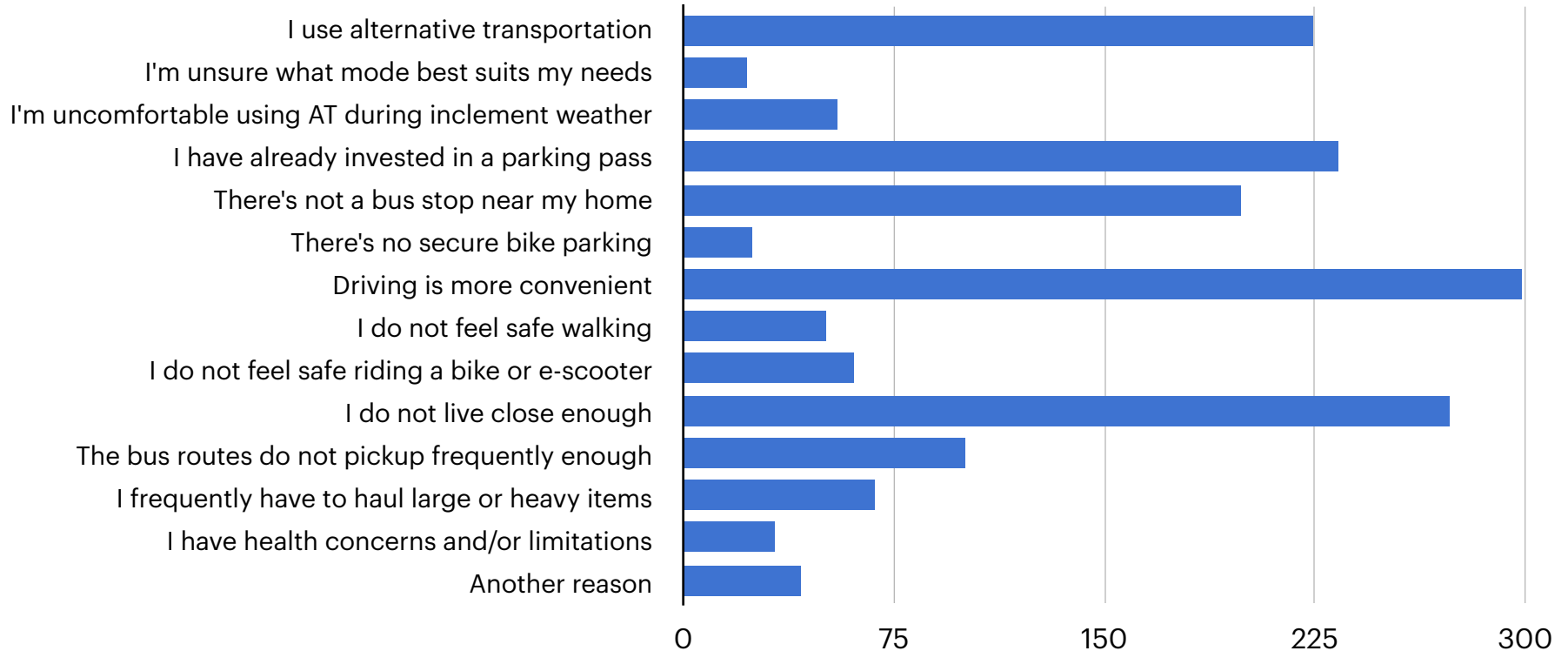
“How satisfied are you with your transportation option(s) when commuting to campus?”

- There is a significant relationship between satisfaction and mode of transportation used.
 - The **most** satisfied individuals are those who **walk**.
 - The **least** satisfied are those who **ride the bus** or **get dropped off by a friend**.



Alternative Transportation

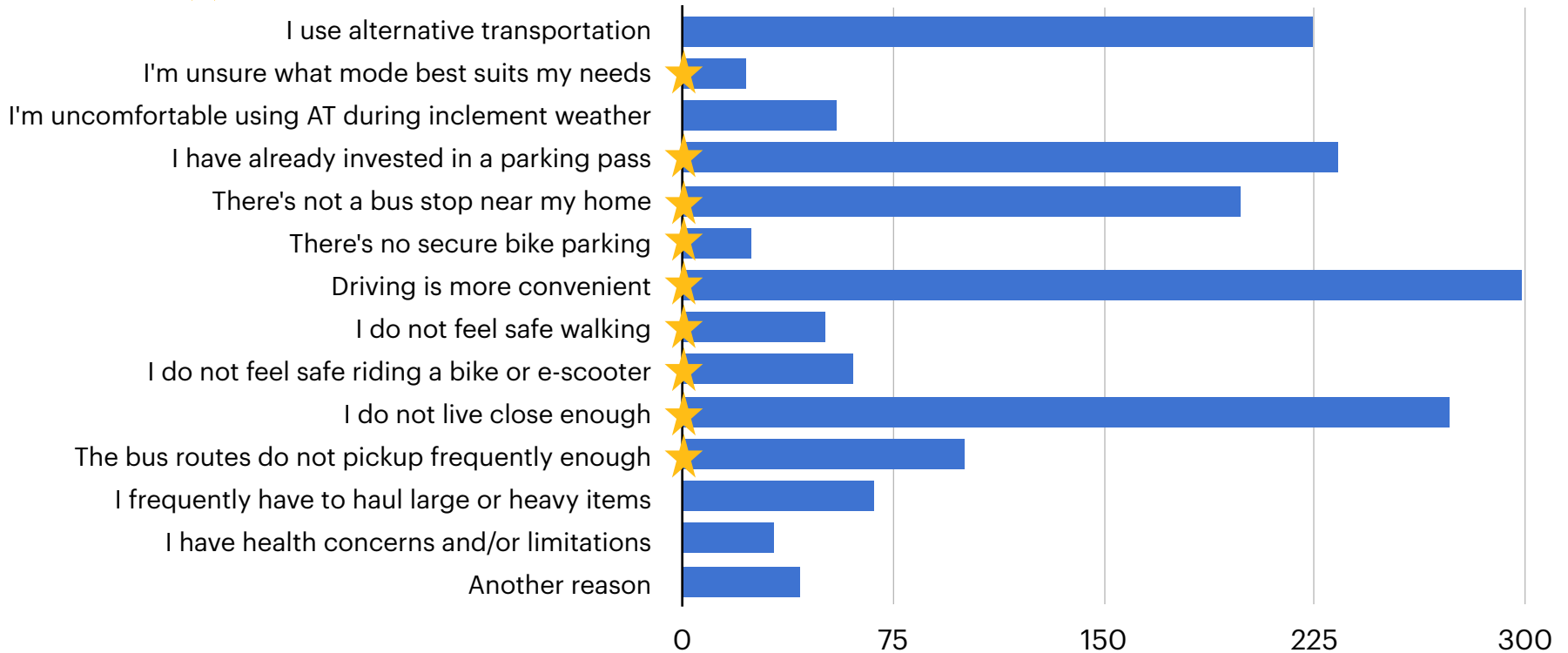
“Do you use alternative transportation (bike, walk, transit, etc.) to commute? If not, why?”



Alternative Transportation

“Do you use alternative transportation (bike, walk, transit, etc.) to commute? If not, why?”

★ *Can be influenced by UA partnerships, development, education, and encouragement efforts.*



Alternative Transportation

“Do you use alternative transportation (bike, walk, transit, etc.) to commute? If not, why?”

Quotes from respondents:

“I commute by bike much less this year with the HPER being closed and so few showering options around campus.”

“The buses are constantly full during peak times and have to drive past students waiting for the bus”

“I’m a working parent and need to be able to leave to get my kids if needed.”

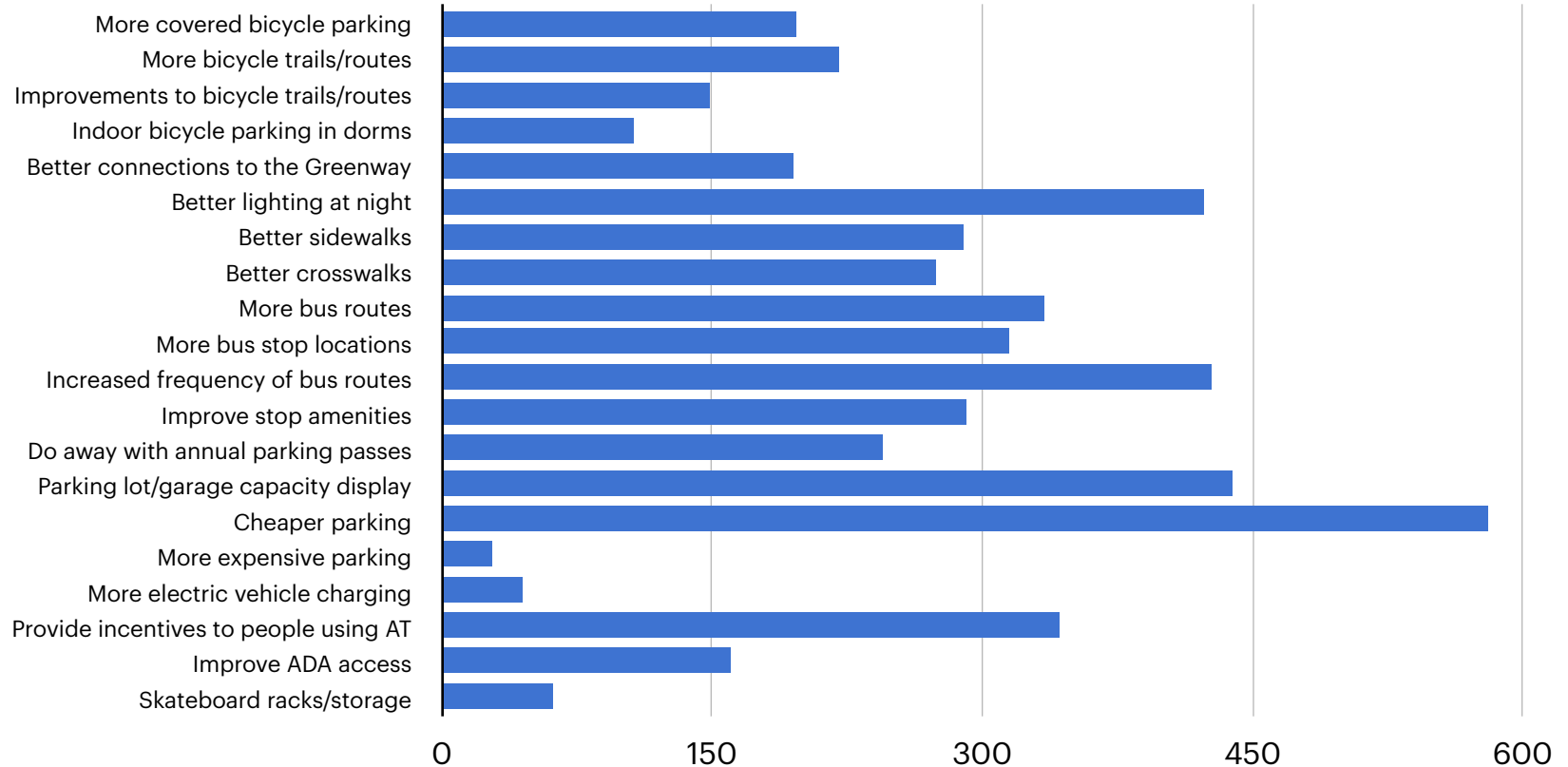
“[There is] no bus route from/to [my area].”

“Not enough alternative transportation infrastructure in my community.”

“I have already invested in a parking pass for the year.”

Transportation Systems

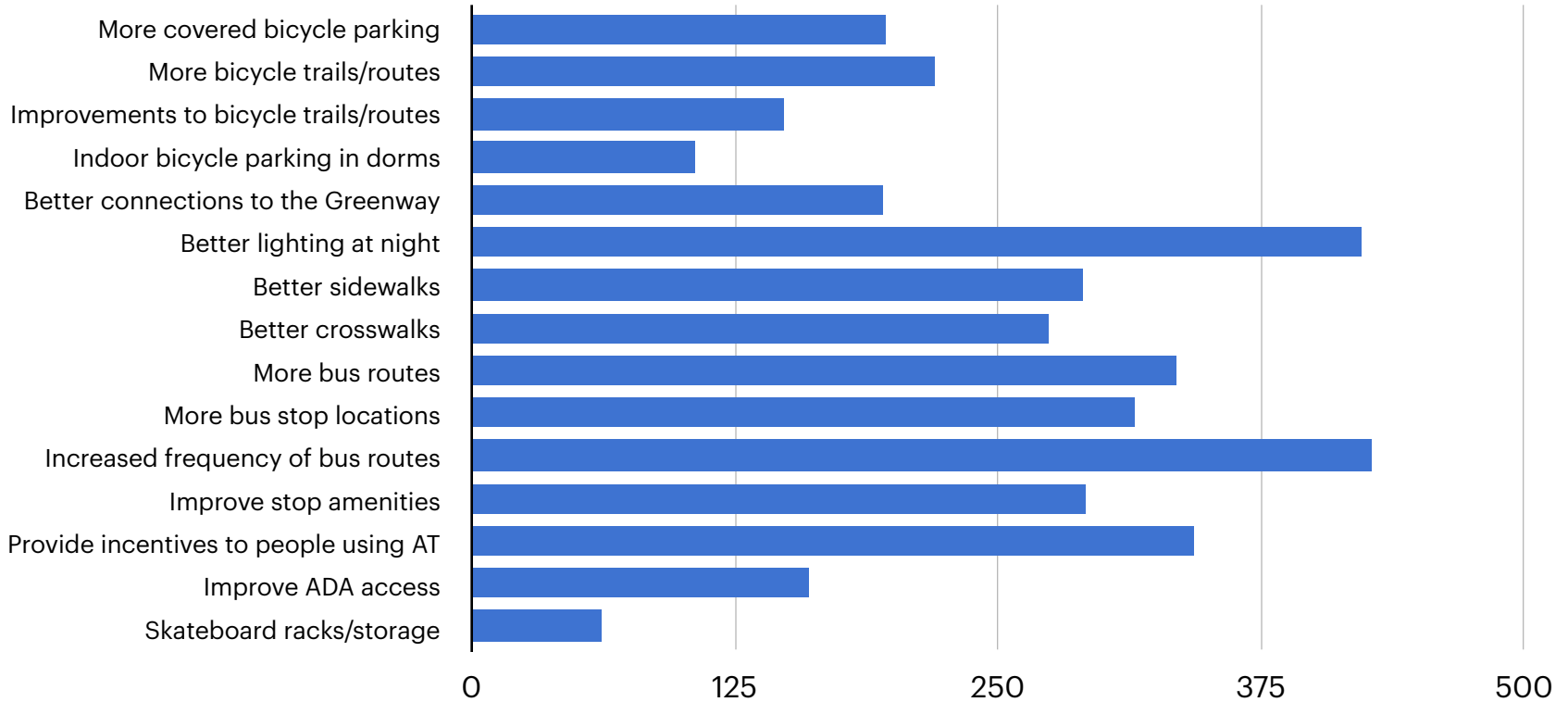
“What would you do to improve UA transportation systems?”



Transportation Systems

“What would you do to improve UA transportation systems?”

Alternative modes only



Transportation Systems

“What would you do to improve UA transportation systems?”

Quotes from respondents:

“Easier access to showers/lockers for bikers to change upon arrival.”

“E-bike charging and secure parking; A secure area in garages like Harmon would be excellent (as well as near dorms that don't have garages close by).”

“Freshman car lots off campus; A lot of cars in on-campus lots just sit there for days or weeks at a time.”

“For students, parking costs associated with how close they live to campus (e.g. the closer someone lives to campus the more they pay.”

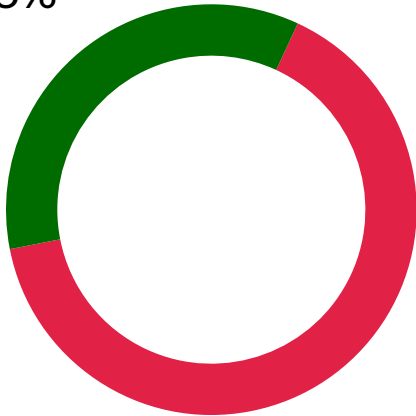
“We desperately need more buses on existing routes! Also, could we run the buses more frequently on Saturdays and start providing a bus service on Sundays?”

“A light rail system that connects east and west Fayetteville with UA and North/South rail line in the middle.”

Escooter Share Programs

“Have you used a Spin or Veo escooter in Fayetteville?”

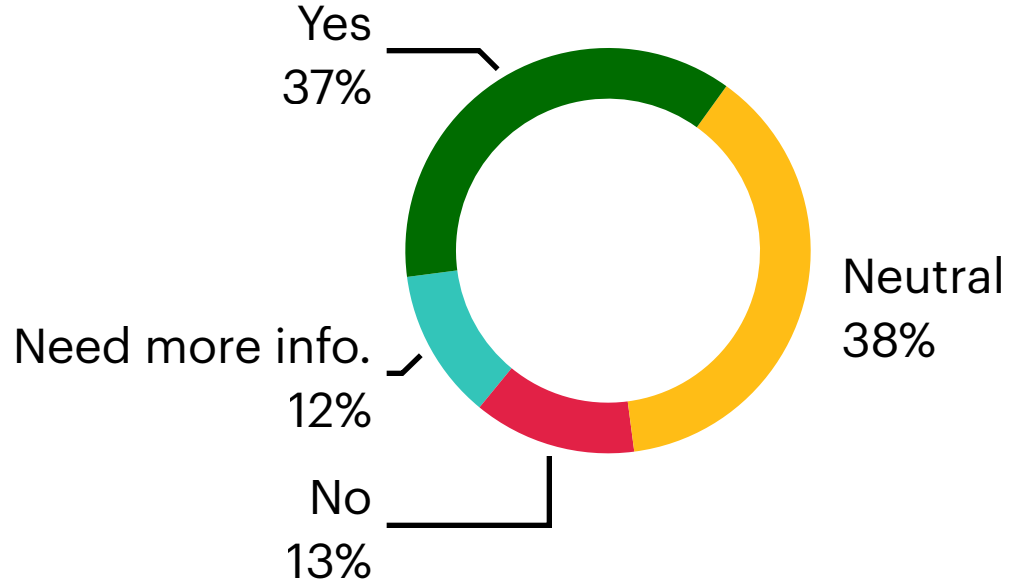
Yes
35%



No
65%

“Are you supportive of expanding systems like the escooter and bike share programs.”

Yes
37%

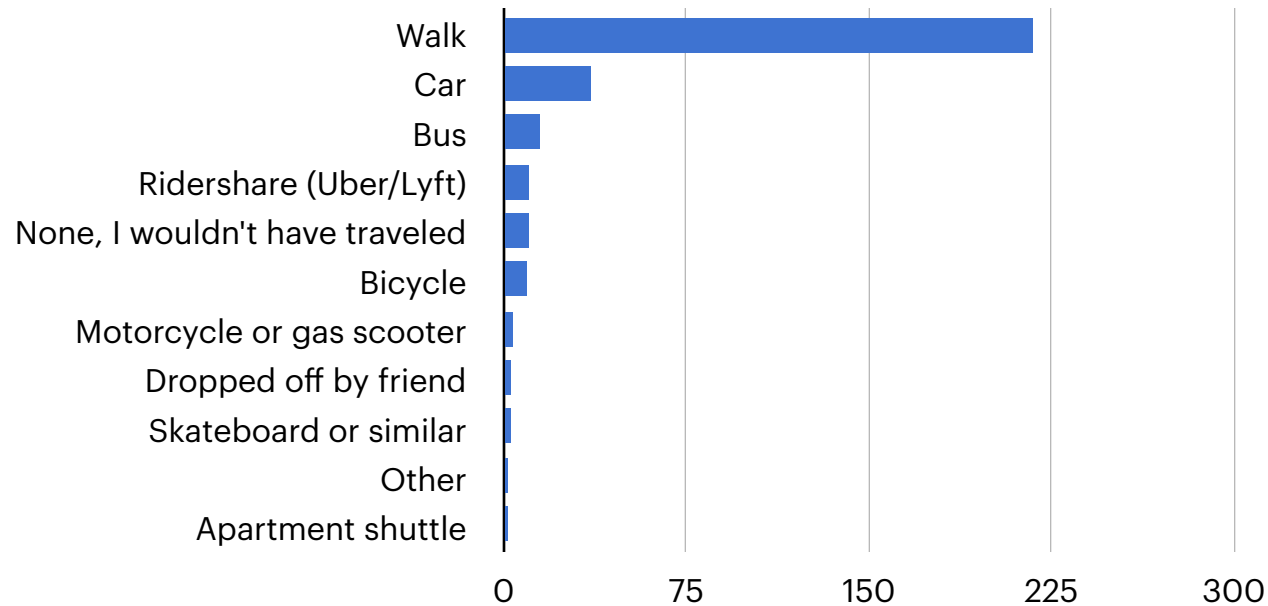


Neutral
38%

No
13%

Escooter Share Programs

“If there was not an escooter available, what mode of transportation would you have used instead?”



Key Takeaways

- Transportation trends have shifted towards alternative modes over the last decade. As campus populations continue to rise, it's likely this trend will continue.
- Respondents noted they would be more likely to utilize alternative modes of transportation if they were provided with incentives and better facilities.
- No single mode of transportation will work for everyone. Equitable investment in alternative modes is vital to sustainable transportation systems.
- Making alternative modes more accessible and easier to use would encourage affiliates to utilize them. The most noted reason for not using alternative transportation was "driving is more convenient."

Biking Facilities - Parking and Ramps

- Respondents noted they would be more likely to utilize alternative modes of transportation if they were provided with incentives and better facilities

Residence Halls



Central Campus



- Making alternative modes more accessible and easier to use would encourage affiliates to utilize them. The most noted reason for not using alternative transportation was “driving is more convenient.”



Maple Street

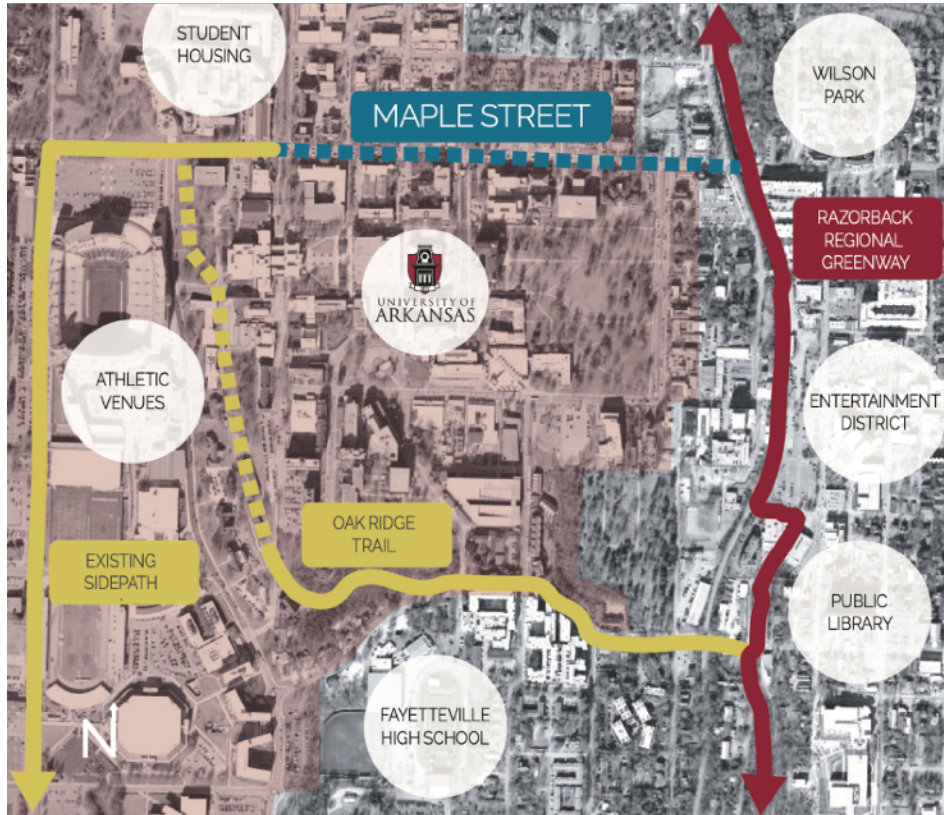


- Full renovation of Maple St. from Garland to the Razorback Regional Greenway
- Aiming for a May start date
- No current or anticipated funding barriers

The new Maple Street is articulated through a series of spaces including a grand urban room at the campus gate, anchoring a landscaped pedestrian walk and cycle track. The central urban room extends Campus Walk across Maple to a new tree-lined edge.



Campus Loop



The University of Arkansas campus sits just blocks from the Razorback Regional Greenway—a regional network of over one hundred miles of paved trails.

Unfortunately, the connectivity between the Greenway and campus destinations lacks adequate infrastructure to serve all ages and abilities of users.

The campus needs a contiguous loop of multi-use paved trail to envelope the campus core and allow for efficient transportation and recreation.

GORP Fest



- Shift from Bike Fest to encompass all outdoor engagement
- Collaboration between OFS, Walton College + Greenhouse Outdoor Recreation Program, UREC Outdoors, and Outdoor Leadership
- Thursday, April 3rd from 11:00am - 2:00pm in the Union Mall



UA Sustainability Council || Agenda



February 18, 2025
Tuesday
3:00-4:30PM
MS Teams

1. Co-chair updates
 - a. Associate Vice Chancellor, Facilities Management, Scott Turley
 - b. Director of Sustainability Academic Programs, Ken McCown
 - c. ASG Director of Environmental Affairs, Ben Hollis
2. Updates from Emma Armendariz, the UA's Active Transportation Coordinator
 - a. Commuter Survey results
 - b. Campus bicycle parking
 - c. Ramp projects
 - d. Maple Street
 - e. Bike Fest → GORP Fest
3. ASG SR2 in support of more native plants on campus
4. EPA Carbon Pollution Reduction Grant
5. Bird Strike prevention decals
6. Discussion about challenges and opportunities across campus
7. New annual reports have been published. Please request physical copy from sustain@uark.edu
8. Good-of-the-Order
9. Next meeting is April 15th



ASG Senate Resolution No. 2

Author(s): Senator Luis Maya

Sponsor(s): Senator Taylor Dixon, Campus Life Chair Sydney Stewart

A Resolution To Reinforce The Support For Preservation and Expansion of Native Arkansas Plants On Campus

Whereas, The University of Arkansas has a responsibility to uphold environmental sustainability standards and promote our state's flora biodiversity on campus, aligning with the inherent values of conservation and environmental stewardship by the state of Arkansas; and

Whereas, This initiative would set a precedent for other universities and educational institutions in Arkansas, creating a model for sustainability that could inspire similar effects statewide and beyond; and

Whereas, Native Arkansas plants, trees, and other vegetation contribute to the local ecosystem by providing habitat and resources for wildlife, promoting campus community, and state ecological health, enhancing the natural beauty of our campus in overabundance; and

Whereas, The incorporation, preservation, and expansion of native plants have been shown to reduce maintenance costs, conserve water, contribute to soil health by naturally adapting to the local climate, in addition to a plethora of other benefits; and

Whereas, The university is currently undergoing various construction and renovation projects in addition to regular landscape maintenance, which presents potential disruptions to existing green spaces and threatens the preservation of Arkansas native flora; and

Whereas, The University of Arkansas has a Landscape manual, which was last updated in 2017, in addition to a variety of other initiatives in place, which have proven instrumental in guiding and improving present and future environmentalism

Whereas,

on campus. However, all of them need to be reviewed and updated to reflect the contemporary landscape of the University of Arkansas to remove all invasive, unnecessary, and cosmetic plants on campus; and

The preservation of Arkansas native plants contributes to a healthier and beautified interconnected environment for students, faculty, staff, and the broader community; and

Whereas,

Promoting the default position of exclusively native plant species on campus, aside from the visual and environmental benefits, serves as an educational opportunity, allowing student to engage with Arkansas' natural heritage and understand the importance of native plants in supporting sustainable ecosystems; and

Be it therefore resolved:

The Associated Student Government Senate strongly supports and encourages the administration and facilities management teams to prioritize the preservation and integration of native Arkansas plant species in all campus construction, renovation, and landscaping projects by updating the Landscape Manual and relevant documents to reflect the contemporary conditions of campus; and

Be it further resolved:

The Associated Student Government Senate recommends that the University of Arkansas to default for the inclusion of native Arkansas plants in all campus developments, which may include but are not limited to:

1. Replanting non-native and invasive plants with Arkansas native plants.
2. Increasing the use of native trees, shrubs, and ground covers in landscaping projects.

Be it further resolved:

The Associated Student Government Senate recommends that the University of Arkansas strive to set an example for environmental

Be it finally resolved:

responsibility and sustainability by promoting an environment that reflects the natural beauty and biodiversity of Arkansas; and

A copy of this legislation be sent to Chancellor Charles Robinson, Vice Chancellor for Student Affairs Jeremy Battjes, Executive Vice Chancellor for Finance & Administration Ann Bordelon, Senior Associate Vice Chancellor and Chief Administration Officer for Campus Services Clayton Hamilton, Associate Vice Chancellor for Facilities Scott Turley, Sustainability Director Eric Boles, Director of Campus Planning and Design Jay Huneycutt, Campus Planner Todd Furgason, UAF Construction Coordinator Kristen Knight, Staff Senate Chair Roy Cordell, and Faculty Senate Chair Samantha Robinson.

For Official Use Only

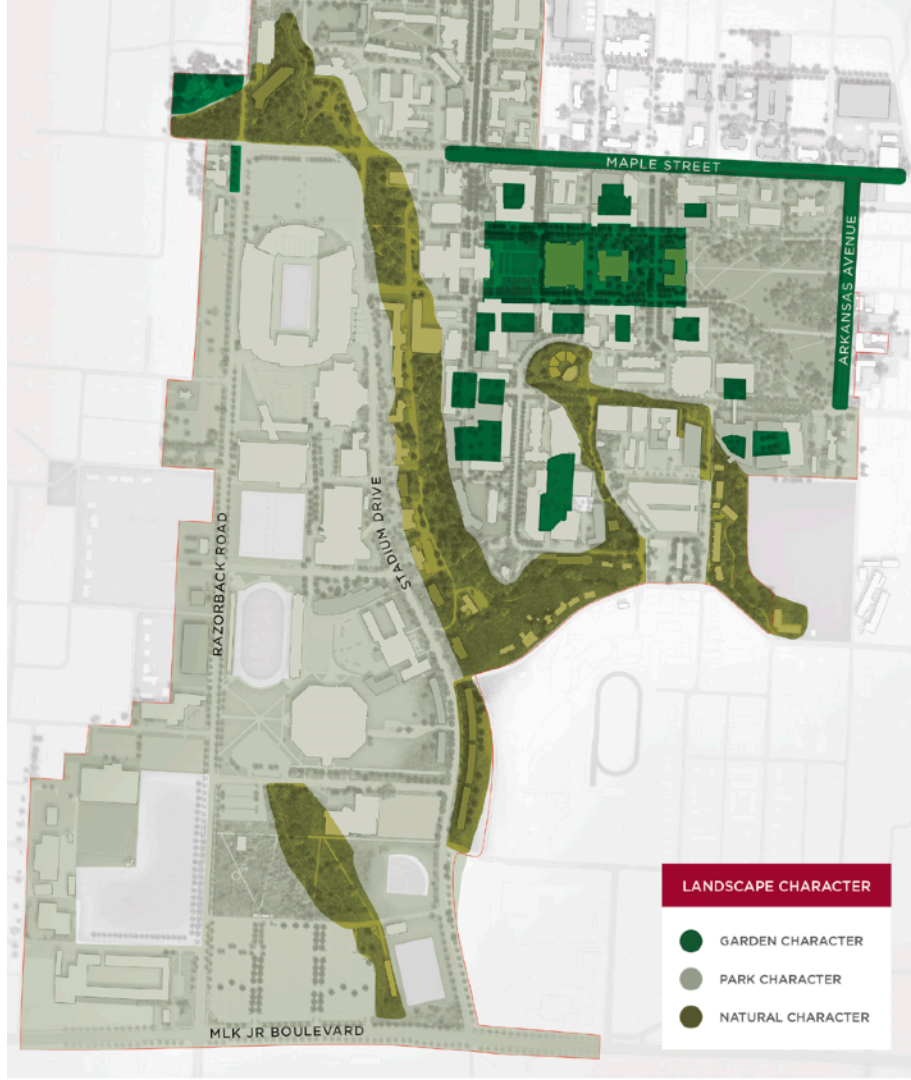
Amendments: _____

Vote Count: Aye 42 _____ Nay 0 _____ Abstentions 1 _____

Legislation Status: Passed _____ Failed _____ Other _____

 _____ 2-7-2025 _____
Logan Martin, ASG Chair of the Senate Date

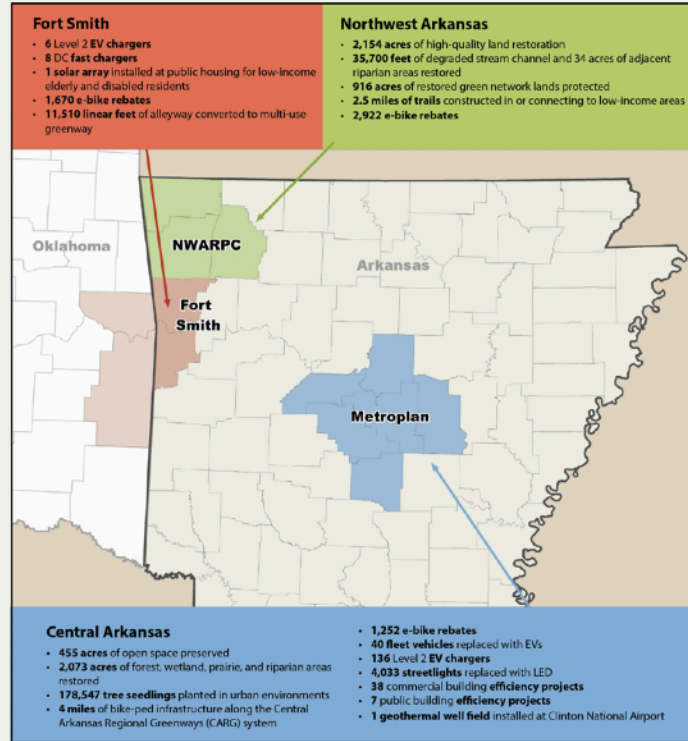
 _____ 2-9-2025 _____
Mason Berres, ASG President Date



EPA CPRG

\$100 million

Transformative Impact



EPA Climate Pollution Reduction Grant

\$36.25 million Transformative Impact
in Northwest Arkansas



NWA GREEN NETWORK

- Sequester carbon and reduce transportation emissions by:
 - **protecting and restoring natural infrastructure cores and corridors;** and
 - **increasing access to active transportation networks.**
- Connect low-income and disadvantaged communities (LIDACs) to jobs, education, and essential services through **safe and convenient access** to bicycle-pedestrian facilities, e-bike vouchers, and the natural environment.
- **Acquire, protect, and restore critical natural lands**, including wetlands, riparian zones, forested lands, and prairies, as well as strategic segments of trail construction.
- Reduce GHGs by **reducing vehicle miles traveled and sequestering carbon in restored natural lands** to ensure that LIDAC residents reap physical, mental, and financial benefits.

18 Community-Identified and Led Projects

- Restoration and preservation of natural cores + corridors
- Active transportation connectivity and improved trail corridor focus
- LIDAC focused projects

2 Supportive Programs

E-bike Incentive Program – Trailblazers

- Mode-shift (replace car trips/decrease carbon emissions)
- Point-of-sale vouchers (rather than after-purchase rebates)
- LIDAC focus (reliable mobility to residents with greater need)
- Buy local (stimulate local businesses and economies)

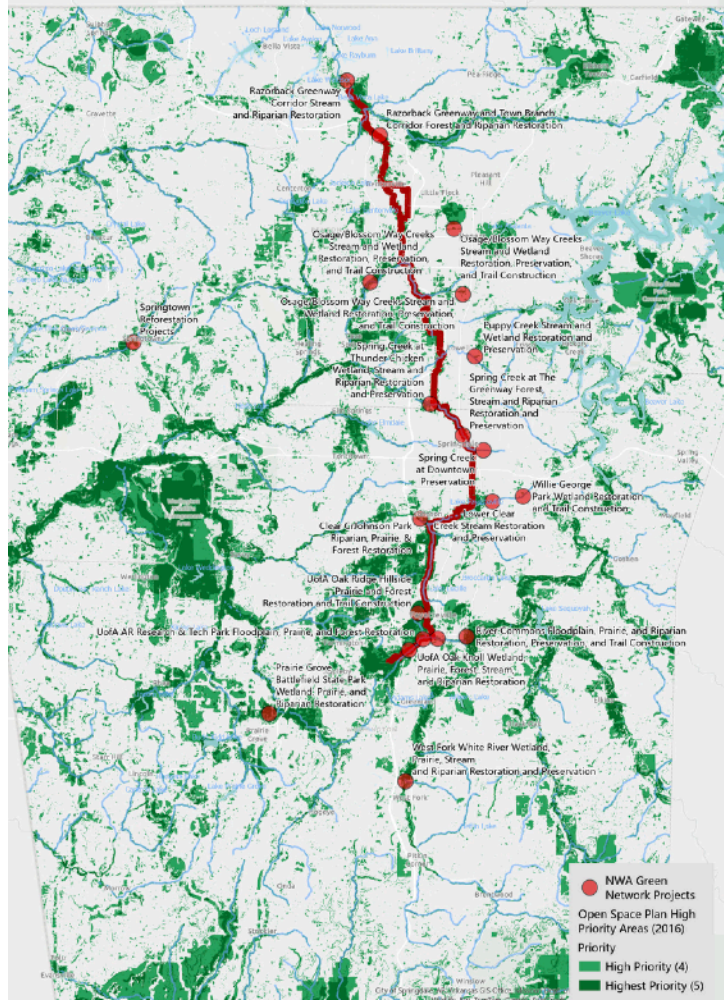
Workforce Training Program – WCRC/IRWP/BWA/AAEF

- **Capacity building / workforce development** for sustainable landscaping and urban green infrastructure maintenance (land conservation technicians, project managers, landscape designers, and contractors)
 - Including training workshops, internships, apprenticeships, partnerships with local training institutions, etc.
- **Establish regional best practices** to restore/add carbon-sequestering and native vegetation as part of natural infrastructure.



NWA GREEN NETWORK

CPRG Implementation Grant Projects



CPRG Implementation Grant - NWA Green Network Project Summary

Site/Project Name	Location	Primary Agency	Partner/NGO	% LIDAC	Est. Project Cost	Est. Allocation in LIDAC	Est. Carbon Impact	Est. Cost per	
							2025 - 2030 (MTCO2e)	Carbon Impact (\$ / MTCO2e)	
Razorback Greenway Corridor Stream and Riparian Restoration	Bella Vista, AR	City of Bella Vista	WCRC	0%	\$ 574,425	\$ -	1,588	315	
Razorback Greenway and Town Branch Corridor Forest and Riparian Restoration	Bentonville, AR	City of Bentonville	WCRC	0%	\$ 2,080,350	\$ -	560	3,228	
River Commons Floodplain, Prairie, and Riparian Restoration, Preservation, and Trail Construction	Fayetteville, AR	City of Fayetteville/ Beaver Water Distict	WCRC/ NWALT	100%	\$ 4,254,743	\$ 4,254,743	11,616	348	
Town Branch Corridor Stream and Riparian Restoration and Preservation	Fayetteville, AR	City of Fayetteville	WCRC/ NWALT	100%	\$ 5,230,516	\$ 5,230,516	15,050	302	
University of Arkansas Oak Knoll Wetland, Prairie, Forest, Stream, and Riparian Restoration	Fayetteville, AR	University of Arkansas	WCRC	100%	\$ 1,425,770	\$ 1,425,770	1,734	715	
University of Arkansas Oak Ridge Hillside Prairie and Forest Restoration and Trail Construction	Fayetteville, AR	University of Arkansas	WCRC	100%	\$ 686,430	\$ 686,430	474	1,259	
University of Arkansas AR Research & Tech Park Floodplain, Prairie, and Forest Restoration	Fayetteville, AR	University of Arkansas	WCRC	100%	\$ 290,950	\$ 290,950	1,016	249	
Clear Creek-Johnson Park Riparian, Prairie, & Forest Restoration	Johnson, AR	City of Johnson	WCRC	0%	\$ 782,345	\$ -	2,672	255	
Puppy Creek Stream and Wetland Restoration and Preservation	Lowell, AR	City of Lowell		100%	\$ 1,684,980	\$ 1,684,980	4,865	346	
Prairie Grove Battlefield State Park Wetland, Prairie, and Riparian Restoration	Prairie Grove, AR	AR State Parks	IRWP	0%	\$ 2,860,050	\$ -	10,457	238	
Osage/Blossom Way Creeks Stream and Wetland Restoration, Preservation, and Trail Construction	Rogers, AR	City of Rogers		67%	\$ 7,077,292	\$ 4,741,786	26,475	263	
Lower Clear Creek Stream Restoration and Preservation	Springdale, AR	City of Springdale	NWALT	55%	\$ 1,597,000	\$ 878,350	1,215	1,308	
Spring Creek at The Greenway Forest, Stream and Riparian Restoration and Preservation	Springdale, AR	City of Springdale	NWALT	100%	\$ 1,026,995	\$ 1,026,995	2,594	393	
Spring Creek at Downtown Preservation	Springdale, AR	City of Springdale	NWALT	100%	\$ 57,500	\$ 57,500	407	123	
Spring Creek at Thunder Chicken Wetland, Stream and Riparian Restoration and Preservation	Springdale, AR	City of Springdale	NWALT	0%	\$ 603,690	\$ -	2,338	255	
Willie George Park Wetland Restoration and Trail Construction	Springdale, AR	City of Springdale	NWALT	0%	\$ 682,700	\$ -	2,443	276	
Springtown Reforestation Projects	Springtown, AR	NWALT	NWALT	0%	\$ 191,475	\$ -	593	281	
West Fork White River Wetland, Prairie, Stream and Riparian Restoration and Preservation	West Fork, AR	City of West Fork	WCRC/NWALT	0%	\$ 808,910	\$ -	2,703	260	
Regional-Serving Programs									
E-Bike Incentive Program	Northwest AR	NWA Trailblazers		75%	\$ 3,500,000	\$ 2,625,000			
Workforce Training Programs	Northwest AR	WCRC/IRWP/AAEF	BWA	75%	\$ 833,879	\$ 625,409			
					Regional Totals	\$ 36,250,000	\$ 23,528,429	88,801	382

Total Budget Allocated to NWA	\$36,250,000
Regional Carbon Impact (2025 - 2030) MTCO2e (without e-bike)	88,801
Regional Carbon Impact (2025 - 2050) MTCO2e (without e-bike)	332,101
Regional Net Cost (\$) / MTCO23 (2025 - 2030)	382
% of regional of dollars in LIDAC	65%

IRWP - Illinois River Watershed Partnership
 WCRC - Watershed Conservation Resource Center
 NWALT - Northwest Arkansas Land Trust
 BWA - Beaver Watershed Alliance
 AAEF - Arkansas Advanced Energy Foundation

CPRG Implementation Grant - NWA Green Network Project Budgets															
Site/Project Name	Location	Primary Agency	Subrecipient	Tree	Land	Stream	Total	Land	Trail	Admin 15%	Total Project	Net Project	Net Community	Percent	
				Planting	Restoration	Restoration	Restoration	Protection		(Subaward)	Cost	Allocation	Allocation		
Razorback Greenway Corridor Stream and Riparian Restoration	Bella Vista, AR	City of Bella Vista	WCRC	\$ -	\$ -	\$ 499,500	\$ 499,500	\$ -	\$ -	\$ 74,925	\$ 574,425	\$ 574,425	\$ 574,425	2%	
Razorback Greenway and Town Branch Corridor Forest and Riparian Restoration	Bentonville, AR	City of Bentonville	WCRC	\$ -	\$ 248,000	\$ 1,561,000	\$ 1,809,000	\$ -	\$ -	\$ 271,350	\$ 2,080,350	\$ 2,080,350	\$ 2,080,350	6%	
River Commons Floodplain, Prairie, and Riparian Restoration, Preservation, and Trail Construction	Fayetteville, AR	City of Fayetteville/ Beaver Water District	WCRC	\$ -	\$ 717,200	\$ 672,750	\$ 1,389,950	\$ -	\$ -	\$ 208,493	\$ 1,598,443	\$ 4,254,743	\$ 9,485,259	26%	
			Fayetteville	\$ -	\$ -	\$ -	\$ -	\$ -	\$ 2,598,800	\$ -	\$ -				\$ 2,598,800
			NWALT	\$ -	\$ -	\$ -	\$ -	\$ 50,000	\$ -	\$ 7,500	\$ 57,500				
Town Branch Corridor Stream and Riparian Restoration and Preservation	Fayetteville, AR	City of Fayetteville	WCRC	\$ -	\$ -	\$ 4,498,275	\$ 4,498,275	\$ -	\$ -	\$ 674,741	\$ 5,173,016	\$ 5,230,516			
			NWALT	\$ -	\$ -	\$ -	\$ -	\$ 50,000	\$ -	\$ 7,500	\$ 57,500				
University of Arkansas Oak Knoll Wetland, Prairie, Forest, Stream, and Riparian Restoration	Fayetteville, AR	University of Arkansas	WCRC	\$ -	\$ 219,300	\$ 1,020,500	\$ 1,239,800	\$ -	\$ -	\$ 185,970	\$ 1,425,770	\$ 1,425,770	\$ 2,403,150	7%	
University of Arkansas Oak Ridge Hillside Prairie and Forest Restoration and Trail Construction	Fayetteville, AR	University of Arkansas	WCRC	\$ 1,000	\$ 56,000	\$ -	\$ 57,000	\$ -	\$ -	\$ 8,550	\$ 65,550	\$ 686,430			
			University of Arkansas	\$ -	\$ -	\$ -	\$ -	\$ -	\$ 539,896	\$ 80,984	\$ 620,880				
University of Arkansas AR Research & Tech Park Floodplain, Prairie, and Forest Restoration	Fayetteville, AR	University of Arkansas	WCRC	\$ -	\$ 253,000	\$ -	\$ 253,000	\$ -	\$ -	\$ 37,950	\$ 290,950	\$ 290,950			
Clear Creek-Johnson Park Riparian, Prairie, & Forest Restoration	Johnson, AR	City of Johnson	WCRC	\$ -	\$ 299,200	\$ 381,100	\$ 680,300	\$ -	\$ -	\$ 102,045	\$ 782,345	\$ 782,345	\$ 782,345	2%	
Puppy Creek Stream and Wetland Restoration and Preservation	Lowell, AR	City of Lowell	Lowell	\$ -	\$ 96,500	\$ 205,200	\$ 301,700	\$ 1,383,280	\$ -	\$ -	\$ 1,684,980	\$ 1,684,980	\$ 1,684,980	5%	
Prairie Grove Battlefield State Park Wetland, Prairie, and Riparian Restoration	Prairie Grove, AR	AR State Parks	IRWP	\$ -	\$ 2,352,000	\$ 135,000	\$ 2,487,000	\$ -	\$ -	\$ 373,050	\$ 2,860,050	\$ 2,860,050	\$ 2,860,050	8%	
Osage/Blossom Way Creeks Stream and Wetland Restoration, Preservation, and Trail Construction	Rogers, AR	City of Rogers	Rogers	\$ -	\$ 528,000	\$ 1,744,506	\$ 2,272,506	\$ 3,658,800	\$ 1,032,400	\$ 113,586	\$ 7,077,292	\$ 7,077,292	\$ 7,077,292	20%	
Lower Clear Creek Stream Restoration and Preservation	Springdale, AR	City of Springdale	Springdale	\$ -	\$ -	\$ 1,539,500	\$ 1,539,500	\$ -	\$ -	\$ -	\$ 1,539,500	\$ 1,597,000			
			NWALT	\$ -	\$ -	\$ -	\$ -	\$ 50,000	\$ -	\$ 7,500	\$ 57,500				
Spring Creek at the Greenway Forest, Stream and Riparian Restoration and Preservation	Springdale, AR	City of Springdale	Springdale	\$ 3,000	\$ 36,000	\$ 930,495	\$ 969,495	\$ -	\$ -	\$ -	\$ 969,495	\$ 1,026,995			
			NWALT	\$ -	\$ -	\$ -	\$ -	\$ 50,000	\$ -	\$ 7,500	\$ 57,500				
Spring Creek at Downtown Preservation	Springdale, AR	City of Springdale	NWALT	\$ -	\$ -	\$ -	\$ -	\$ 50,000	\$ -	\$ 7,500	\$ 57,500	\$ 57,500	\$ 3,967,885	11%	
Spring Creek at Thunder Chicken Wetland, Stream and Riparian Restoration and Preservation	Springdale, AR	City of Springdale	Springdale	\$ 6,540	\$ 125,000	\$ 414,650	\$ 546,190	\$ -	\$ -	\$ -	\$ 546,190	\$ 603,690			
			NWALT	\$ -	\$ -	\$ -	\$ -	\$ 50,000	\$ -	\$ 7,500	\$ 57,500				
Willie George Park Wetland Restoration and Trail Construction	Springdale, AR	City of Springdale	Springdale	\$ -	\$ 170,000	\$ -	\$ 170,000	\$ -	\$ 455,200	\$ -	\$ 625,200	\$ 682,700			
			NWALT	\$ -	\$ -	\$ -	\$ -	\$ 50,000	\$ -	\$ 7,500	\$ 57,500				
Springtown Reforestation Projects	Springtown, AR	NWALT	NWALT	\$ -	\$ 121,500	\$ 45,000	\$ 166,500	\$ -	\$ -	\$ 24,975	\$ 191,475	\$ 191,475	\$ 191,475	1%	
West Fork White River Wetland, Prairie, Stream and Riparian Restoration and Preservation	West Fork, AR	West Fork	WCRC	\$ -	\$ 53,200	\$ 600,200	\$ 653,400	\$ -	\$ -	\$ 98,010	\$ 751,410	\$ 808,910	\$ 808,910	2%	
			NWALT	\$ -	\$ -	\$ -	\$ -	\$ 50,000	\$ -	\$ 7,500	\$ 57,500				
Project Subtotals							\$ 19,533,116	\$ 5,442,080	\$ 4,626,296	\$ 2,314,630		\$ 31,916,121			
Regional-Serving Programs															
E-Bike Incentive Program	Northwest AR		Trailblazers								\$ 3,500,000	\$ 3,500,000			
Workforce Training Programs	Northwest AR		WCRC	(BWA to receive \$244,100 pass through from WCRC)							\$ 602,300	\$ 833,879	\$ 4,333,879	12%	
			IRWP	\$ 211,500											
			AAEF	\$ 20,079											
Regional Total											\$ 36,250,000	\$ 36,250,000	100%		





The 10-acre Post Oak Savanna



The CSRC Remnant Prairie







UNIVERSITY OF
ARKANSAS

SUSTAINABILITY REPORT 2024

OFFICE FOR SUSTAINABILITY



UA Sustainability Council || Agenda



February 18, 2025
Tuesday
3:00-4:30PM
MS Teams

1. Co-chair updates
 - a. Associate Vice Chancellor, Facilities Management, Scott Turley
 - b. Director of Sustainability Academic Programs, Ken McCown
 - c. ASG Director of Environmental Affairs, Ben Hollis
2. Updates from Emma Armendariz, the UA's Active Transportation Coordinator
 - a. Commuter Survey results
 - b. Campus bicycle parking
 - c. Ramp projects
 - d. Maple Street
 - e. Bike Fest → GORP Fest
3. ASG SR2 in support of more native plants on campus
4. EPA Carbon Pollution Reduction Grant
5. Bird Strike prevention decals
6. Discussion about challenges and opportunities across campus
7. New annual reports have been published. Please request physical copy from sustain@uark.edu
8. Good-of-the-Order
9. Next meeting is April 15th



INSPIRATION
INTEGRATION
TRANSFORMATION