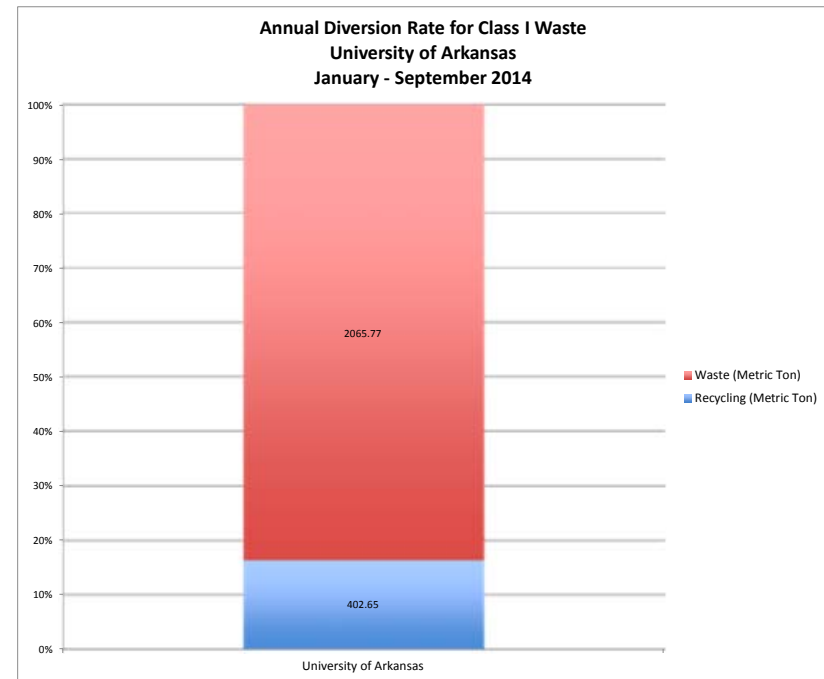
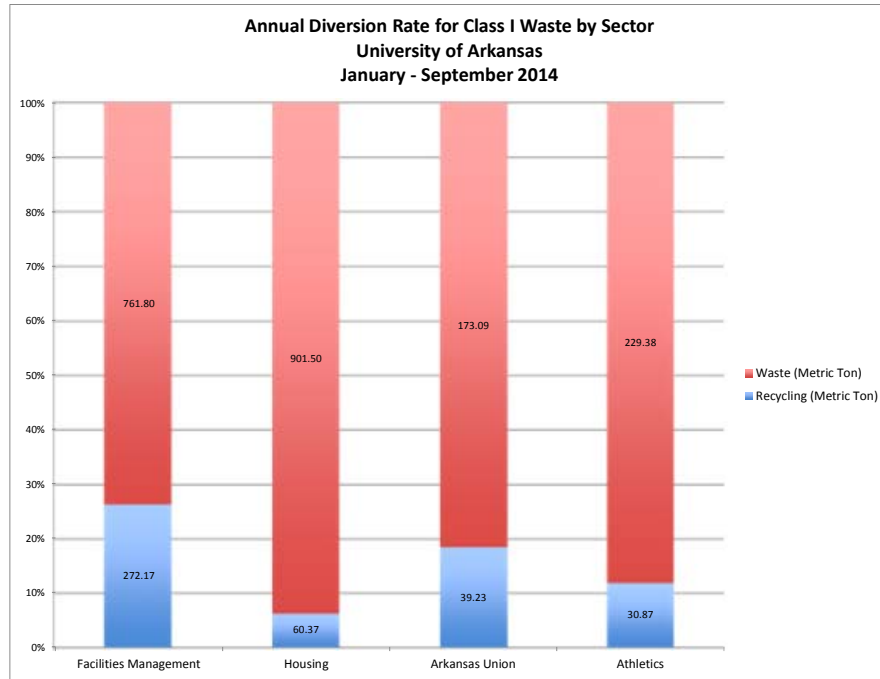


Annual Diversion Rate for Class I Waste by Sector  
University of Arkansas

	Waste (Metric Ton)	Recycling (Metric Ton)	Diversion Rate
Facilities Management	761.80	272.17	26%
Housing	901.50	60.37	6%
Arkansas Union	173.09	39.23	18%
Athletics	229.38	30.87	12%
<b>Total Tons</b>	<b>2065.77</b>	<b>402.65</b>	<b>16%</b>



Monthly Diversion Rate for Class I Waste by Sector (2014)

Facilities Management	Date	Waste (MT)	Recyclables (MT)	Organic Diversion (MT)	Diversion Rate
January	158.53	25.96	0.00	31%	
February	83.4	24.60	0.00	23%	
March	96.91	29.20	0.00	23%	
April	88.76	26.39	0.00	23%	
May	92.22	24.97	0.00	21%	
June	87.07	17.61	0.00	20%	
July	64.31	23.50	0.00	27%	
August	88.97	34.91	0.00	28%	
September	101.63	44.72	0.00	31%	
Total	761.8	272.17	0.00	26%	

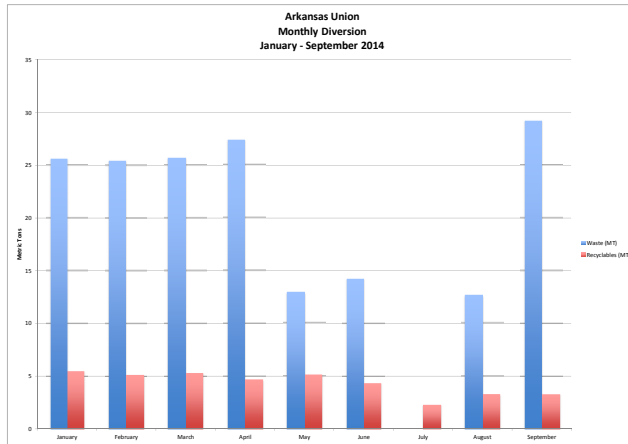
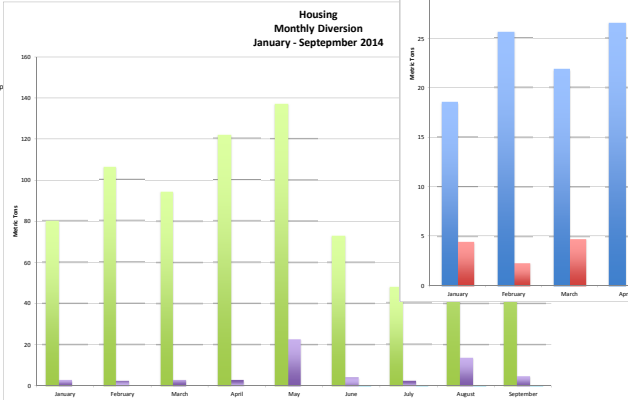
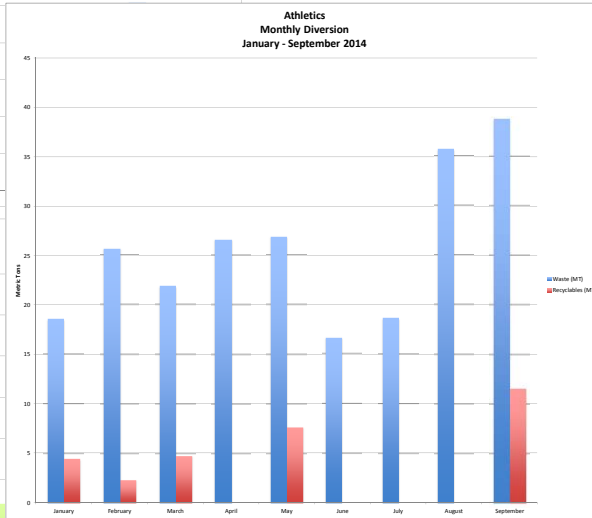
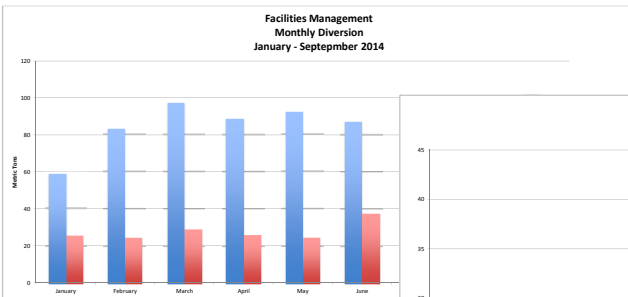
Housing	Date	Waste (MT)	Recyclables (MT)	Organic Diversion (MT)	Diversion Rate
January	80.05	2.95	0.00	3%	
February	106.17	2.73	0.00	3%	
March	98.76	2.24	0.00	2%	
April	121.99	2.93	0.00	2%	
May	137.13	22.92	0.00	14%	
June	75.21	4.24	0.48	5%	
July	48	2.61	0.48	5%	
August	113.86	13.86	0.48	11%	
September	126.32	4.97	0.48	4%	
Total	901.5	60.37	1.94	6%	

Arkansas Union	Date	Waste (MT)	Recyclables (MT)	Organic Diversion (MT)	Diversion Rate
January	25.63	5.54	0.00	18%	
February	25.41	5.13	0.00	17%	
March	25.67	5.36	0.00	17%	
April	27.38	4.68	0.00	15%	
May	12.9	5.19	0.00	29%	
June	14.23	4.40	0.00	24%	
July	0	2.28	0.00	100%	
August	12.80	3.36	0.00	21%	
September	29.22	3.35	0.00	10%	
Total	173.09	39.23	0.00	18%	

Athletics	Date 2014	Waste (MT)	Recyclables (MT)	Organic Diversion (MT)	Diversion Rate
January	18.54	0	0	0%	
February	25.68	2.32	0	8%	
March	21.91	4.80	0	18%	
April	26.6	0.00	0	0%	
May	26.89	7.68	0	22%	
June	16.62	0.00	0	0%	
July	18.64	0.00	0	0%	
August	35.71	0.00	0	0%	
September	38.79	11.62	0	23%	
Total	229.38	30.87	0	12%	



Facilities	Defenbaugh									
Category	January	February	March	April	May	June	July	August	September	Category Total
Mixed Cans & Bottles	0.96	0.70	2.38	1.86	1.51	0.77	1.52	0.87	1.71	12.28
Sorted White Ledger	4.24	3.68	4.73	4.46	4.28	11.49	4.36	5.09	8.46	50.79
Low Grade Mix	7.06	5.88	5.25	5.87	6.19	10.26	5.79	4.98	10.39	61.67
Printers Mix	3.14	1.69	3.93	1.83	2.44	4.07	2.32	3.99	6.54	29.95
Office File Waste	0.63	1.22	0.68	0.53	0.98	1.61	0.68	0.61	1.67	8.61
Old Newsprint	1.84	1.88	1.88	3.04	1.83	2.55	1.19	1.20	2.49	17.89
Old Corrugated Cardboard	10.98	12.29	13.61	11.74	10.50	11.36	10.12	22.06	18.43	121.09
Expanded Polystyrene	0.00	0.00	0.00	0.00	0.00	0.00	0.13	0.00	0.00	0.13
Low Density Polyethylene	0.00	0.00	0.00	0.00	0.00	0.00	0.00	0.00	0.00	0.00
Monthly Total	28.85	27.33	32.44	29.32	27.74	42.12	26.11	38.79	49.69	302.40 Grand Total
	January	February	March	April	May	June	July	August	September	
<b>Combined Monthly Total</b>	28.85	27.33	32.44	29.32	27.74	42.12	26.11	38.79	49.69	
Housing at 10%	2.89	2.73	3.24	2.93	2.77	4.21	2.61	3.88	4.97	
Facilities Management at 90%	25.96	24.60	29.20	26.39	24.97	37.91	23.50	34.91	44.72	

Note: Housing delivers recyclables to Razorback Recycling at an estimated rate of 10% of recyclables.

Housing

Date	Recyclables (MT)	Compost	Food Recovery	Notes
January	2.89			
February	2.73			
March	3.24			
April	2.93			
May	22.92			Move-out
June	4.21		0.48	
July	2.61		0.48	
August	13.86		0.48	Move-in
September	4.97		0.48	
Total	62.31		1.94	

Arkansas Union  
Pepsi Dream Machine

Date	Category	Recyclables (MT)
2014	Aluminum	0.18
2014	PET	0.45
	Total	0.63

Waste Management

Date	Bottles & Cans	Glass	Cardboard	Paper
Jan-14	1.34	2.93	0.01	1.25
Feb-14	2.46	0.78	0.05	1.85
Mar-14	3.17	0.89	0.05	1.25
Apr-14	1.45	0.85	0.04	2.34
May-14	2.81	0.65	0.05	1.68
Jun-14	1.08	0.69	0.03	2.61
Jul-14	0.00	0.83	0.04	1.41
Aug-14	1.63	0.49	0.03	1.14
Sep-14	0.00	1.41	0.03	1.90
				total

**Combined Total**            39.87

Total (MT)

5.54

5.13

5.36

4.68

5.19

4.40

2.28

3.30

3.35

39.23

Athletics

Waste Management	Date	Weight (MT)
	January	4.45
	February	2.32
	March	4.80
	April	0.00
	May	7.68
	June	0.00
	July	0.00
	August	0.00
	September	11.62
	Total	30.87

	Year	Payment	Annual Tonnage	\$/Ton	Provider
Facilities Management	FY 14	\$155,288.25			Deffenbaugh
Housing	FY 14				Deffenbaugh
Arkansas Union					
Athletics					



